

# Rittal – The System.

Faster – better – everywhere.

► **Choose Better.**  
**Save up to 75% in energy costs this summer.**

**Best prices on industry-leading enclosure air conditioners**

Blue e+ cooling units offer:

- Up to 75% energy savings with hybrid and heat pipe technology
- Multi-voltage capability
- Touch-screen interface
- NFC Control
- Component-friendly cooling for longer service life

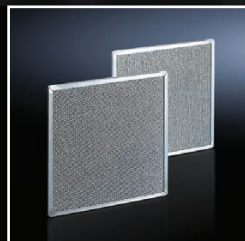
Promo ends  
August 31<sup>st</sup>



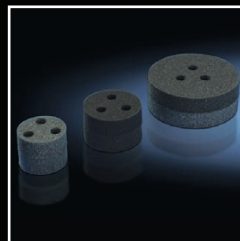
## Accessories



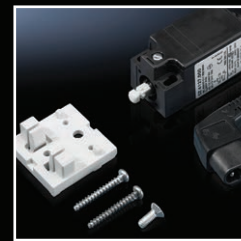
► IoT Interface compatible



► Foam/Metal Filter Mat



► Plugs for Interior Air Outlet



► Door Switch



► Air Duct System

ENCLOSURES

POWER DISTRIBUTION

CLIMATE CONTROL

IT INFRASTRUCTURE

SOFTWARE & SERVICES

FRIEDHELM LOH GROUP

[www.rittal.ca](http://www.rittal.ca)



# Rittal – The System.

Faster – better – everywhere.

## Generation “Blue e+ and Blue e” Wall-mounted air conditioners

Part No.	Blue e * \$ Saved / Year	EER - Energy Efficiency Ratio	Useful cooling output Q <sub>k</sub> BTU (W)	Dimensions H x W x D Inches (mm)	Voltage V, Hz
3185830	\$133	3.05	5459 (1600)	37 x 16 x 12 (950 x 400 x 310)	110-240 & 380-480, 50/60
3186930	\$148	3.5	6830 (2000)	63 x 18 x 12 (1600 x 450 x 294)	110-240 & 380-480, 50/60
3187930	\$215	2.63	8879 (2600)	63 x 18 x 12 (1600 x 450 x 294)	110-240 & 380-480, 50/60
3188940	\$247	3.46	14340 (4200)	63 x 18 x 15 (1600 x 450 x 393)	380-480, 50/60
3189940	\$247	2.64	19808 (5800)	63 x 18 x 15 (1600 x 450 x 393)	380-480, 50/60
3302100	N/A	1.18	1025 (300)	22 x 11 x 5.5 (550 x 280 x 140)	115, 50/60
3302110		1.32			230, 50/60
3303500	\$18	1.31	1708 (500)	22 x 11 x 8 (550 x 280 x 200)	115, 50/60
3303510	\$13	1.4			230, 50/60
3304500	\$86	1.59	2561 (750)	22 x 11 x 11 (550 x 280 x 280)	115, 50/60
3304510	\$85	2.08			230, 50/60
3304540	\$102	1.83	3415 (1000)	37 x 16 x 10 (950 x 400 x 260)	230, 50/60
3305500	\$100	1.83			115, 50/60
3305510	\$69	1.83			400, 3~, 50 460, 3~, 60
3305540	\$120	1.83	5123 (1500)	37 x 16 x 10 (950 x 400 x 260)	115, 50/60
3328500	\$82	1.83			230, 50/60
3328540	\$63	1.83			400, 3~, 50 460, 3~, 60
3329500	\$94	2.4	6830 (2000)	62 x 16 x 11 (1580 x 400 x 295)	230, 50/60
3329540	\$73	2.22			400, 3~, 50 460, 3~, 60
3332540	\$169	2.11	8537 (2500)	62 x 16 x 11 (1580 x 400 x 295)	230, 50/60
3361500	\$135	2.11			400, 3~, 50 460, 3~, 60
3361510	\$173	2.47	13661 (4000)	62 x 20 x 13 (1580 x 500 x 340)	400, 3~, 50 460, 3~, 60

Air conditioners in stainless steel, NEMA 4X and with climate control doors are on the internet. Note: Additional system relay is available. For connection diagram, see latest assembly instructions under [www.rittal.ca](http://www.rittal.ca). Inch measurements are rounded. \* Based on 5 days/week, 8 hours/day at 75% capacity vs Rittal non Blue e units.

### Cooling units with TÜV Certified Performance

- Rittal is the only manufacturer with enclosure Air Conditioners fully tested, cooling performance certified.
- Rittal cooling units are guaranteed to provide the cooling output you paid for.
- Verified cooling outputs are up to 10% higher than previously claimed.
- Improved EER (Energy Efficiency Ratio = Watts of cooling capacity divided by watts of power consumption).



MARKHAM- HEAD OFFICE  
115B Shield Court  
Markham, ON  
L3R 9T5  
Toll Free Phone: 1-888-667-6632

MISSISSAUGA  
6150 Kennedy Road, Unit 1  
Mississauga, ON  
L5T 2J4  
Toll Free Phone: 1-888-670-5654

CAMBRIDGE  
375 Sheldon Drive, Unit 3-4  
Cambridge, ON  
N1T 1B1  
Phone: 519-231-0100



**RITTAL**

ENCLOSURES

POWER DISTRIBUTION

CLIMATE CONTROL

IT INFRASTRUCTURE

SOFTWARE & SERVICES